

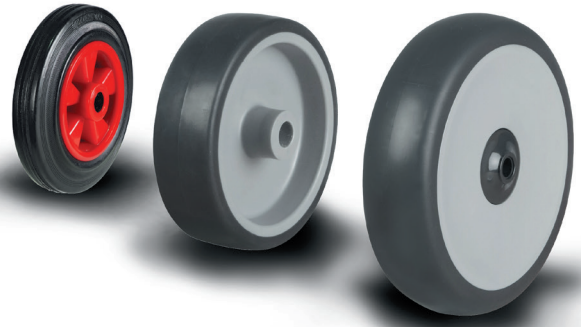


# WHEELS

[www.atlashandlinguk.co.uk](http://www.atlashandlinguk.co.uk)

01527 501 148

# WHEELS



WHEELS



## WTPR

Grey Rubber on Plastic Centre

50WTPRDL	50	20		6/8	24/21	40
50WTPRGD	50	17		8	21	40
75WTPRDL	75	23		8	30	50
75WTPRGD	75	24		8	25	50
80WTPR	80	32		12	40	60
100WTPRDL	100	27		12	31	75
100WTPRLW	100	32		12	35	90
100WTPRGD	100	24		12	25	80
100WTPR	100	32		12	40	80
125WTPRDL	125	27		12	31	90
125WTPRLW	125	32		12	35	120
125WTPR	125	32		12	45	100
150WTPRLW	150	32		12	35	130



\*Anti Static available



## WTPRBIG

100WTPRBIG	100	32		8	35	90
125WTPRBIG	125	32		8	35	110
150WTPRBIG	150	32		8	35	120



## WTPRBIG BOX

100WTPRBIG BOX	100	30		8	36	70
125WTPRBIG BOX	125	32		8	36	90
160WTPRBIG BOX	160	38		12	59	140
200WTPRBIG BOX	200	42		12	59	200



## WGR

Grey Rubber on Plastic Centre

50WGR	50	17		8	22	40
75WGR	75	21		10	24	50
100WGR	100	27		12	31	80
125WGR	125	27		12	31	100



## WPSB

Rubber Tyre on Plastic Centre

80WPSB	80	30		12	40	65
100WPSB	100	32		12	40	80
125WPSB	125	37		12	45	100
160WPSB	160	40		20	60	175
200WPSB	200	50		20	60	205
250WLP SRBM	250	60		20/25/25.4	60	250

# WHEELS



## **WEABJ** Elastic Rubber on Aluminium Centre

<b>80WEABJ</b>	80	36		15	40	100
<b>100WEABJ</b>	100	40		15	40	180
<b>100WEA50BJ</b>	100	50		17	56	220
<b>125WEABJ</b>	125	38		15	41	200
<b>125WEA50BJ</b>	125	50		20/25	56	250
<b>150WEA50BJ</b>	150	50		20/25	56	300
<b>160WEABJ</b>	160	50		20/25	60	350
<b>200WEABJ</b>	200	50		20/25	60	450
<b>250WEABJ</b>	250	50		20/25	60	550



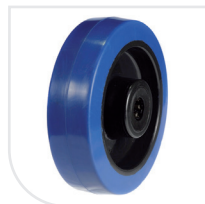
## **WBSB** Rubber on Steel Disk Centre

<b>80WBSB</b>	80	30		12	40	65
<b>100WBSB</b>	100	32		12	40	80
<b>125WBSB</b>	125	37		12/15	45	100
<b>160WBSB</b>	160	40		20	60	175
<b>200WBSB</b>	200	50		20	60	205



## **WGRB** Grey Rubber on Plastic Centre

<b>80WGRB</b>	80	30		12	40	65
<b>100WGRB</b>	100	32		12	40	80
<b>125WGRB</b>	125	37		15	45	100
<b>160WGRB</b>	160	40		20	60	175
<b>200WGRB</b>	200	50		20	60	205



## **WBNB** Blue Synthetic Rubber

<b>80WBNB</b>	80	34		12	40	150
<b>100WBNB</b>	100	34		12	40	180
<b>100WBNB</b>	100	36		12	44	200
<b>125WBNB</b>	125	36		12	46	250
<b>160WBNB</b>	160	45		20	60	350
<b>200WBNB</b>	200	45		20	60	400



## **WBNBJ** Blue Synthetic Rubber

<b>100WBNBJ</b>	100	50		12	60	150
<b>125WBNBJ</b>	125	50		12	60	210
<b>150WBNBJ</b>	150	50		12	60	300
<b>200WBNBJ</b>	200	45		20	60	400



## **WRTBJ** Rubber on Cast Iron Centre

<b>100WRT36BJ</b>	100	36		20	43	180
<b>100WRTBJ</b>	100	50		20/25	60	210
<b>125WRT38BJ</b>	125	38		20	45	190
<b>125WRTBJ</b>	125	50		20/25	60	275
<b>150WRTBJ</b>	150	50		20/25	60	400
<b>200WRTBJ</b>	200	50		20/25	60	600
<b>250WRTBJ</b>	250	50		20/25	60	700
<b>300WRTBJ</b>	300	50		20/25	60	800

# WHEELS



WHEELS



<b>WPNO</b> Poly Nylon						
<b>80WPNO</b>	80	30		12	40	100
<b>100WPNO</b>	100	30		12	40	150
<b>125WPNO</b>	125	35		15	44	200
<b>150WPNO</b>	150	50		15	45	280
<b>160WPNO</b>	160	38		20	58	250
<b>200WPNO</b>	200	50		20	60	500



<b>WPNOB</b> Poly Nylon						
<b>80WPNOB</b>	80	30		12	40	100
<b>100WPNOB</b>	100	30		12	40	150
<b>125WPNOB</b>	125	35		15	44	200
<b>150WPNOB</b>	150	40		20	58	350
<b>160WPNOB/SS</b>	160	50		20	58	350
<b>200WPNOB</b>	200	50		20	60	500



<b>WPNR</b> Poly Nylon						
<b>100WPNRB</b>	100	34		12	41	200
<b>125WPNRB</b>	125	40		12	44	260



<b>WPNBJM</b> Poly Nylon						
<b>100WPNBJ38</b>	100	38		15	41	250
<b>100WPNBJ</b>	100	50		17	56	280
<b>125WPNBJ38</b>	125	38		15	41	280
<b>125WPNBJ</b>	125	50		17	56	340
<b>150WPNBJ</b>	150	50		12/15	62/56	430
<b>150WPNOBJ</b>	150	45		20/25	58	450
<b>200WPNBJ</b>	200	50		12/15	62/56	500
<b>200WPNOBJ</b>	200	50		20/25	58	600

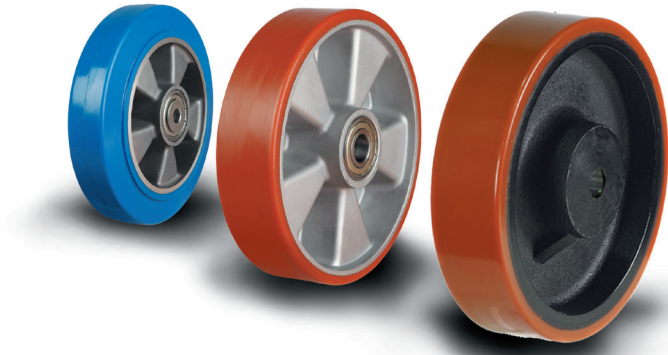


<b>WPXBJ</b> Resilient Poly Nylon						
<b>100WPXBJ</b>	100	50		12	60	300
<b>125WPXBJ</b>	125	50		12	60	380
<b>150WPXBJ</b>	150	50		12	60	500
<b>200WPXBJ</b>	200	50		12	60	600



<b>WOPUBJ</b> Resilient Poly Nylon						
<b>100WOPUBJ</b>	100	50		17	60	200
<b>125WOPUBJ</b>	125	50		17	60	250
<b>150WOPUBJ</b>	150	50		17	60	300
<b>200WOPUBJ</b>	200	50		17	60	400

# WHEELS



WHEELS



### WEPN 80 SHORE A

Elastic Poly Nylon

<b>80WEPN</b>	80	32		12	40	100
<b>100WEPN</b>	100	32		12	40	150
<b>125WEPN</b>	125	32		12	40	175
<b>150WEPN</b>	150	42		20	60	200
<b>200WEPN</b>	200	50		20	60	250



### WEPNBJM 82 SHORE A

Elastic Poly Nylon

<b>100WEPNBJ</b>	100	38		15	41	250
<b>125WEPNBJ</b>	125	38		15	41	280

Elast  
Prene



### WEPABJ 80 SHORE A

Elastic Polyurethane  
on Aluminium Centre

<b>100WEPABJ15</b>	100	40		12	42	300
<b>125WEPABJ15</b>	125	40		12	44	350
<b>160WEPABJ20</b>	160	50		20	60	600
<b>200WEPABJ20</b>	200	50		20	60	800



### WPTABJ

Polyurethane on  
Aluminium Centre

<b>80WPTABJ</b>	80	30		12	40	180
<b>100WPTABJ</b>	100	40		15	44	250
<b>125WPTABJ15</b>	125	40		15	44	300
<b>125WPTABJ</b>	125	50		20/25	60	500
<b>150WPTABJ</b>	150	50		20/25	60	550
<b>160WPTABJ</b>	160	50		20/25	60	600
<b>200WPTABJ</b>	200	50		20/25	60	800



### WPTPB

Polyurethane Cast Iron  
**PILOT BORE**

<b>125WPTPB</b>	125	50		19.5/31.5	50	600
<b>150WPTPB</b>	150	50		19.5/31.5	52	900
<b>200WPTPB</b>	200	50		19.5/31.5	52	1200
<b>250WPTPB</b>	250	50		24.5/36.5	60	1400
<b>300WPTPB</b>	300	50		24.5/36.5	60	1500
<b>200WPT75PB</b>	200	75		24.5	60	1800
<b>250WPT70PB</b>	250	70		24.5	75	2000
<b>300WPT75PB</b>	300	75		24.5	75	2300

Extra High Resilience Polyurethane. Bore and keyway service available.

# WHEELS



WHEELS



### WIRPUBJ

Polyurethane on Cast Iron Core

100WIRPUBJ	100	50		17	60	260
125WIRPUBJ	125	50		17	60	350
150WIRPUBJ	150	50		17	60	400
200WIRPUBJ	200	50		17	60	450



### WHPT

Polyurethane on Cast Iron Core

200WHPTBJ	200	75		20/25	82	1800
250WHPTBJ	250	75		20/25	82	2500
300WHPTBJ	300	75		20/25	82	2800
400WHPTBJ	400	100		30/35	108	4500



### WPTBJ

Polyurethane on Cast Iron Centre

50WPT	50	14		12	17	80
100WPT38BJ	100	38		20/25	45	300
125WPT38BJ	125	38		20/25	43	450
100WPTBJ	100	50		20/25	60	450
125WPTBJ	125	50		20/25	60	550
150WPTBJ	150	50		20/25	60	800
200WPTBJ	200	50		20/25	60	1000
250WPTBJ	250	50		20/25	60	1300



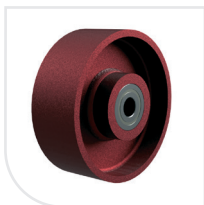
200WPT75BJ	200	75		20/25	82	1400
250WPT75BJ	250	75		20/25	82	1800
300WPT75BJ	300	75		20/25	82	2200
200WPT100BJ	200	100		25/30/35	100	1800
250WPT100BJ	250	100		25/30/35	100	2000
300WPT100BJ	300	100		25/30/35	100	2600



### WPTBJRP

Round Profile Polyurethane on Cast Iron Centre

100WPTBJRP	100	50		20/25	50	350
125WPTBJRP	125	50		20/25	56	400
150WPTBJRP	150	50		20/25	56	650
200WPTBJRP	200	50		20/25	56	800



### WDIBJ

Ductile Iron

200WDIBJ	200	75		25	82	2500
250WDIBJ	250	75		25	82	2700
300WDIBJ	300	75		25	82	2900

# WHEELS



<b>WCI/B/BJ</b> Cast Iron						
<b>50WST</b>	50	14		12	17	135
<b>100WCI38B</b>	100	38		12	46	350
<b>100WCI38BJ</b>	100	35		20	44	350
<b>125WCI38BJ</b>	125	35		20	44	400
<b>100WCIBJ</b>	100	50		20	60	450
<b>125WCIBJ</b>	125	40		20	60	650
<b>150WCIBJ</b>	150	45		20	60	900
<b>200WCIBJ</b>	200	45		20/25	60	1100
<b>250WCIBJ</b>	250	54		20/25	60	1500
<b>WHT/G/BJ/WAN</b> High Temperature Resistant Wheels						
<b>100WHT 220 (PHENOLIC RESIN)</b>	100	38		10	45	150
<b>100WHTG280 (EPOXY RESIN)</b>	100	38		15	40	200
<b>100WRTBJHT - 250°C (RUBBER)</b>	100	35		15	40	300
<b>150WAN19 - 120°C (PHENOLIC RESIN)</b>	150	50		19.1	56	400
<b>200WAN19 - 120°C (PHENOLIC RESIN)</b>	200	50		19.1	56	500
<b>150WAN19 - 220°C (PHENOLIC RESIN)</b>	150	50		19.1	56	400
<b>200WAN19 - 220°C (PHENOLIC RESIN)</b>	200	50		19.1	56	500
<b>150WAN19 - 300°C (PHENOLIC RESIN)</b>	150	50		19.1	56	400
<b>200WAN19 - 300°C (PHENOLIC RESIN)</b>	200	50		19.1	56	500

# WHEELS



WHEELS



## WNYBJG

Nylon

80WNYBJG	80	30		8/10	40	220
80WNYBJG/45	80	30		8/10	45	220
100WNYBJGHD	100	32		8/10	40	250
100WNYBJG/45	100	32		8/10	45	250
125WNYBJG	125	32		8/10	45	250



## WPNBJG

Poly Nylon

100WPNBJG	100	35		8/10	45	200



## WHTBJG

High Temperature Polymer Glass Fibre

80WHT	80	30		12	40/44	280
80WHTBJG*	80	30		8/10	40	280
80WHTBJG/45*	80	30		8/10	45	280
100WHT	100	32		12	40/44	300
100WHTBJG*	100	32		8/10	40	300
100WHTBJG/45*	100	32		8/10	45	300
125WHT	125	40		15	45	400
125WHTBJG*	125	40		8/10	44	400

\*280°C FOR SHORT PERIODS ONLY



## WPP

Polypropylene

50WPP	50	20		6	22	40
75WPP	75	21		8	30	50
80WPP	80	35		12	40	150
100WPPDL	100	26		12	32	80
100WPP	100	35		12	40	180
125WPP	125	26		12	32	100
80WPPB	80	35		12	40	150
100WPPB	100	35		12	40	180
125WPPB	125	35		12	44	220
50WPP-BLACK	50	20		6	22	40
75WPP-BLACK	75	21		8	30	50
100WPP-BLACK	100	26		12	32	80
125WPP-BLACK	125	26		12	32	100



## WAPP

Nylon

100WAPPBJ	100	50		15	60	260
125WAPPBJ	125	50		15	60	350
150WAPPBJ	150	50		15	60	400
200WAPPBJ	200	50		15	60	450



# WHEELS



<b>WNY</b> Nylon						
<b>50WNY12</b>	50	14		12	17	80
<b>50WNY - BLACK</b>	50	17		8	21	50
<b>50WNY8</b>	50	20		8	25	50
<b>50WNYI</b>	50	25		6.4	27	60
<b>50WNYHD</b>	50	30		8	40	60
<b>63WNY</b>	63	28		9.5	33	80
<b>75WNYL</b>	75	24		8	26	90
<b>75WNY - BLACK</b>	75	25		12	39	170
<b>75WNY</b>	75	25		12	39	170
<b>75WNYI</b>	75	31		12.7	40	110
<b>80WNY</b>	80	35		12	40	200
<b>100WNY</b>	100	35		12	40	200
<b>125WNY</b>	125	35		12	44	270
<b>150WNY</b>	150	40		20	58	350
<b>150WNYHD</b>	150	45		20	58	800
<b>160WNY</b>	160	45		20	58	350
<b>200WNY</b>	200	50		20	58	500

\*Glass fibre nylon wheels available -40° - +130°.



<b>WNYB</b> Nylon						
<b>80WNYB</b>	80	35		12	40	200
<b>100WNYB</b>	100	35		12	40	200
<b>100WNYB/45</b>	100	32		12	45	250
<b>125WNYB</b>	125	35		12	44	270
<b>125WNYBHD</b>	125	45		20	58	750
<b>150WNYB</b>	150	40		20	58	350
<b>160WNYB</b>	160	45		20	58	350
<b>200WNYB</b>	200	50		20	58	500



<b>WNYBJ</b> Nylon						
<b>100WNYBJHD</b>	100	40		15	45	650
<b>125WNYBJ</b>	125	35		15	40	400
<b>125WNYBJHD</b>	125	45		20	58	750
<b>150WNYBJ</b>	150	45		20	58	700
<b>150WNYBJHD</b>	150	45		20	58	1000
<b>200WNYBJ</b>	200	50		20	58	800
<b>200WNYBJHD</b>	200	50		20	58	1000
<b>250WNYBJ</b>	250	60		25	60	1400



<b>WCNYBJ</b> Nylon						
<b>200WCNYBJ</b>	200	80		45	80	4500
<b>250WCNYBJ</b>	250	80		50	80	5000
<b>300WCNYBJ</b>	300	80		55	80	7000

# WHEELS



<b>WLBS</b> Rubber on Steel						
<b>350WLBSB</b>	350	80		20/25/25.4	66	400
<b>400WLBSB</b>	400	100		20/25/25.4	66	700



<b>WSHM</b> Rubber on Plastic						
<b>260WSHM25.4</b>	260	95		25.4	59	125



<b>WATP</b> Pneumatic on Plastic						
<b>200WATPB</b>	200	50		20	60	75
<b>260WATPB</b>	260	85		20	75	125



<b>WATM</b> Pneumatic on Steel						
<b>200WATMR</b>	200	50		20	60	75
<b>370WATMRBM</b>	370	85		20/25/25.4	66	180
<b>400WATMRBM</b>	400	100		20/25/25.4	66	300
<b>400WATMB</b>	400	100		25	75	350



<b>WATMBJ</b> Pneumatic on Steel						
<b>200WATMBJ</b>	200	56		17	70	136
<b>260WATMBJ</b>	260	83		16	100	158
<b>300WATMBJ</b>	300	83		16	100	204
<b>300WATMBJM25</b>	300	105		25	75	120



<b>WATMBJ OFFSET</b> Pneumatic on Steel						
<b>260WATMBJM16/56OSH</b>	260	85		16	56	150

# WHEELS



	<b>WATP</b> Flat Free PU Environmental Polyurethane						
	<b>260WATPB/MICROCEL</b>	260	85		20	75	125
	<b>WATMRBM</b> Flat Free PU Environmental Polyurethane						
	<b>200WATMRBM/MICROCEL</b> <b>370WATMRBM/MICROCEL</b>	200 370	50 85	 	20 20/25/25.4	58 60	125 180
	<b>WATM</b> Flat Free PU Environmental Polyurethane						
	<b>400WATMRBM/MICROCEL</b>	400	100		20/25/25.4	66	300
	<b>WATPL</b> Flat Free PU Environmental Polyurethane						
	<b>400WATPLM254/75/MICROCEL</b> <b>400WATPLRBM254/75/MICROCEL</b>	400 400	95 95	 	25.4 25.4	75 75	120 120
	<b>WATML</b> Flat Free PU Environmental Polyurethane						
	<b>400WATMLM254/75/MICROCEL</b> <b>400WATMLRBM254/75/MICROCEL</b>	400 400	95 95	 	25.4 25.4	75 75	120 120
	<b>WATMBJ OFFSET</b> Flat Free PU Environmental Polyurethane						
	<b>260WATMBJM16/56OSH/MICROCEL</b>	260	85		16	56	150